



Investigated **7,212** property-damage only crashes



Investigated **197** fatality crashes, a reduction of 39 fatal crashes from 2007



Investigated **2,139** injury crashes



Inspected **9,526** school buses



Inspected **149,858** vehicle identification numbers



Inspected **44,609** trucks



Seat belt use in Kansas increased to **77%**



**629** felony drug arrests



**969** felony arrests

# 2008 STATISTICS



Cleared **1,360** database entries in the FBI National Crime Information Center



Recovered **139** stolen vehicles



Issued **80,906** speeding citations



Spent **26,030** hours assisting **110,600** motorists



Issued **20,456** moving hazardous violations



Conducted **123** MCSAP safety reviews



Issued **5,861** overweight violations



Performed **8,370** fuel inspections



Administered **4,551** preliminary breath tests



Administered **2,993** evidentiary alcohol tests



Arrested **3,400** impaired drivers



Issued **15,499** seat belt violations



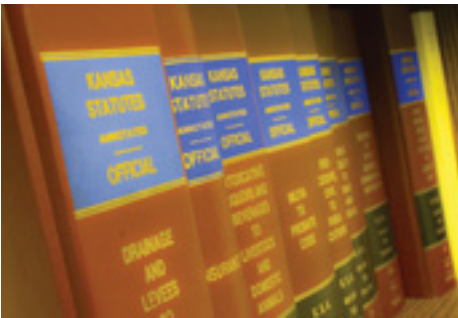
CHART responded to **112** requests for assistance, crash investigations, and crime scene reconstructions



Issued **4,144** child restraint violations



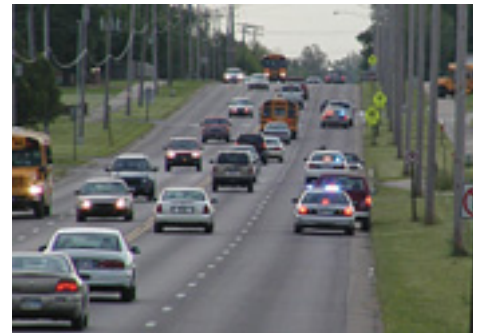
Conducted **2,823** criminal interdiction searches



Spent **12,648** hours preparing for court



Conducted **793** check lanes



Spent over **461,239** hours patrolling **13,850,985** miles