

DRIVER'S LICENSE

Commercial Driver's License (CDL) is not required by an operator of a farm vehicle which is:

- (i) Controlled and operated by a farmer, including operation by employees or family members;
- (ii) Used to transport either agricultural products, farm machinery, farm supplies, or both to or from a farm;
- (iii) Not used in the operations of a common or contract motor carrier; and
- (iv) Used within 150 miles of the farmer's farm, including the crossing of state line.

Federal legislation pre-empts any state regulation or reciprocity agreement that overlaps in subject matter.

Moving Ahead for Progress in the 21st Century Act (MAP-21) overrides any reciprocity agreement between states where and when MAP-21 is applicable. If a farmer is operating outside 150 miles from the farm, reciprocity agreements might apply.

Commercial Driver's License requirements apply outside 150 miles of the farmer's farm if not operating wholly within Kansas.

Class A motor vehicles include any combination of vehicles with a gross combination weight rating of 26,001 pounds or more, providing the gross vehicle weight rating (GVWR) of the vehicle or vehicles being towed is in excess of 10,000 pounds;

Class B motor vehicles include any single vehicle with a gross vehicle weight rating of 26,001 pounds or more, or any such vehicle towing a vehicle not in excess of 10,000 pounds gross vehicle weight rating.

IFTA – INTERNATIONAL FUEL TAX AGREEMENT

A qualified motor vehicle is a motor vehicle with a gross vehicle weight (GVW) or registered gross weight exceeding 26,000 lbs. or; a motor vehicle having 3 or more axles or; a combination vehicle with a gross combination weight rating or combined registered gross weight exceeding 26,000 lbs.

If you are going to cross the state line into an adjoining state in a qualified motor vehicle in the furtherance of your agribusiness, the IFTA license and 2 affixed decals, or a temporary motor fuel permit will be required.

Online application for IFTA.

<https://www.ksrevenue.org/forms-mfifta.html>

Temporary motor fuel permits may be obtained from K-TRIPS at (785) 368-6501 and/or online.

<https://www.k-trips.com/>

Hazardous Materials (HAZMAT)

Please see the Pipeline and Hazardous Materials Safety Administration website: <https://www.phmsa.dot.gov/>

FLOW CHART ON BACK INCLUDES

Medical Examiner's Certificate 391.2;

Driver's Record of Duty Status

Electronic Logging Device (ELD); and

USDOT Number and Name Displayed

Online application for USDOT Number.

https://ask.fmcsa.dot.gov/app/answers/detail/a_id/57/~/~/_/how-do-i-get-a-usdot-number%3F

Interstate Farming Operations



Kansas farmers crossing state lines



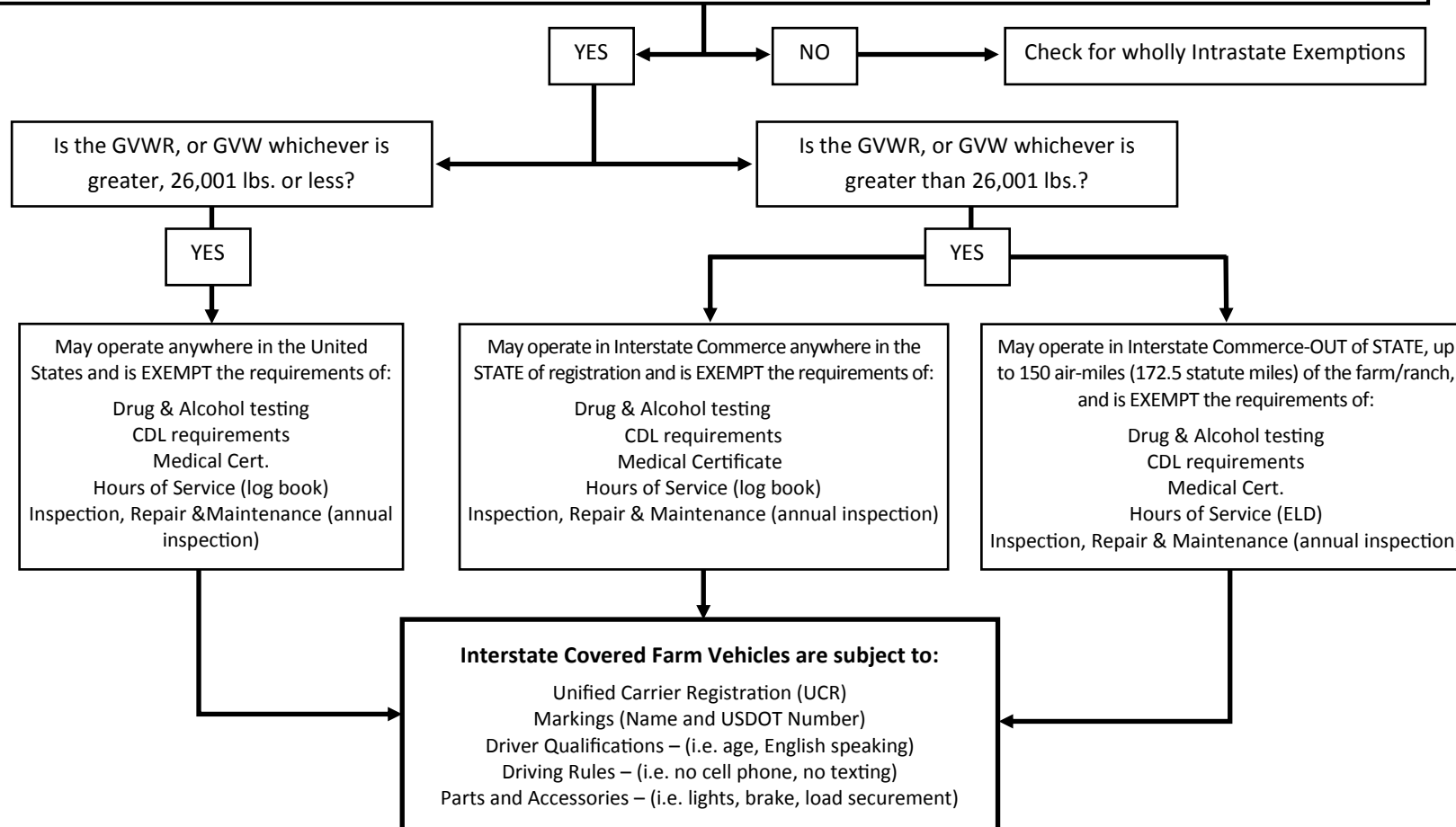
INTERSTATE AGRICULTURAL EXEMPTIONS FROM FMCSRs

IMPORTANT NOTE: The provisions of MAP-21 generally only apply to INTERSTATE COMMERCE. The determination of whether a shipment occurring within a State is interstate or intrastate commerce is rather complex and must be made on a case-by-case basis. (Effective 10/1/2012)

MAP-21 DEFINITION OF A COVERED FARM VEHICLE – Straight or Articulated Truck:

1. Is the Vehicle you are operating in Interstate Commerce, **AND**
2. Is the Driver: (1) a farm owner or operator; or (2) a ranch owner or operator; or (3) an employee or family member of the farm, ranch or operator; or operated pursuant to a crop share agreement, **AND**
3. Is the Driver transporting agricultural commodities, livestock, machinery or supplies to or from the farm or ranch, **AND**
4. Does the interstate farm vehicle have farm registration or other designation by the state, the vehicle is registered in, identifying it as a Covered Farm Vehicle? **AND**
5. The vehicle is **NOT** transporting hazardous materials **requiring** placards.

(MUST MEET ALL 5 REQUIREMENTS TO BE A COVERED FARM VEHICLE)
DOES THE VEHICLE MEET THE DEFINITION OF A COVERED FARM VEHICLE?



INTERSTATE NON-COVERED FARM VEHICLE AGRICULTURAL EXEMPTIONS

Farm Vehicle Driver

Farm Vehicle Drivers are not subject to driver qualification requirements. (i.e. Medical Certificate, Age, English speaking). If driving an **ARTICULATED** farm vehicle, then the farm vehicle driver **IS** subject to the Medical Certificate requirements.

A “Farm Vehicle Driver” is in a farm operated vehicle within a 150 air-miles of the farm, transporting farm products or supplies and not transporting placardable amounts of HazMat.

Agricultural Commodity Hours of Service (Log Book) Exemption

Driver’s transporting agricultural products, as defined, are not required log books. during harvest season (KS - Jan. 1 to Dec. 31)

- Transporting agricultural commodities from the source (field, intermediate storage or handling location away from the farm FMCSA guidance) to a location within a 150 air-mile radius from the source; or
- Farm supplies for agricultural purposes from a wholesale or retail distribution point of the farm supplies to a farm or other location where the farm supplies are intended to be used within a 150 air-mile radius from the distribution point; or
- Farm supplies for agricultural purposes from a wholesale distribution point of the farm supplies to a retail distribution point of the farm supplies within a 150 air-mile radius from the wholesale distribution point.

“Agricultural commodity” means the unprocessed products of agriculture, horticulture, and cultivation of the soil, including but not limited to wheat, corn, hay, milo, sorghum, sunflowers, soybeans, and livestock. Agricultural commodities shall not include honey, poultry products, and timber products.”

“Farm supplies” means supplies or equipment for use in the planting or harvesting of agricultural commodities, but does not include the transportation of hazardous materials of the type or quantity that requires the vehicle to be placarded.

Hazardous Materials Intrastate Exemptions

Intrastate HazMat exemptions are found in 49 C.F.R. 173.5 (Agricultural operations).

CDL

KS has limited Interstate Farm CDL exception agreements, between KS and MO, NE & OK. See <http://kcc.ks.gov/transportation/agriculture> for details.